

**Medway Community
Safety Partnership Plan
2009-2012**

Contents

Foreword

Executive Summary

Glossary of Terms

Introduction

- Setting the scene, an overview of Medway

Medway Community Safety Partnership structure

Statutory Content

Process Cycle

Priority Areas

- Substance Misuse
- ASB, including criminal damage
- Violent Crime
- Improving Local Street Scene
- Fear of Crime
- Public Confidence

Agency Contact Details

Appendix

- CSP Groups LAA
- National Indicators
- Priority Area Framework 2009-2010

Foreword

“Working together in partnership to build stronger communities and ensure Medway is a safe place to live, work and visit”.

The next 20 years are truly exciting times for the residents of Medway and for those who choose Medway as a place to live, work and visit. With an expanding water front development and progressive plan to change the heart of the shopping centre, Medway is the place to be. Significant opportunities exist for growth with hotel and leisure facilities being developed that will appeal to those choosing Medway as a place to live. New high-speed links to London will cut journey times significantly improving opportunities for commuting and to choose Medway as a place to visit for all it has to offer.

With over 250,000 residents and a growth in people visiting Medway it is important that statutory, voluntary and commercial partners work together to improve Medway as a place. This years partnership plan has focussed on 6 key priorities to make Medway an even safer, cleaner and greener place to be.

Through speaking with our public and looking at the changing times it is important that we focus this years plans on reducing the fear of crime and improving the confidence that the public have in the effectiveness of both the police and council to tackle issues such as drugs and alcohol, violence, antisocial behaviour and criminal damage and continue to make improvements to the cleanliness of our streets.

It is through this strength of partnership working with community confidence at the heart of everything we do that the Medway Community Safety Partnership continues to deliver an improving street scene through clean up campaigns, reducing levels of violent crime during the night time and reducing antisocial behaviour through early intervention and providing things to do. Working together in partnership has now taken a further step forward with partners now working together in a combined Community Safety Unit with a focus on reducing Criminal Damage, antisocial behaviour and improving the street scene of Medway.

Medway Community Safety Partnership have a number of developing projects for 2009/10 which will further improve the safety and quality of life for the people of Medway and those who live, work and visit. I am confident that we will deliver these projects and will deliver on the priorities that have been chosen.

Steve Corbishley

Chair of the Medway CSP and Police Area Commander for Medway.



Making Medway a safe place to live work and socialise is important to the future of our area.

With our aim to putting our customers at the centre of everything we do we have listened to the needs of our communities. Through consultation, priorities have been set for the next year, ensuring that the Medway Community Safety Partnership continues to focus on the issues that affect daily life.

It is through the strength and commitment of the individual partners and engagement through the Partners and Communities Together (PACT) and other community groups that improvements will be made.

Exciting initiatives such as community safety television, graffiti removal teams and an ASB response team, have established Medway at the forefront of delivery and members of the partnership will continue to use such innovation in 2009/10 to combat anti social behaviour and crime as well as improving the condition of the street scene in Medway

Councillor Rehman Chishti

Cabinet Member of Community Safety and Enforcement and Vice-Chair of the Community Safety Partnershp



Executive summary

The Partnership plan for 2009/11 has been streamlined to deliver greater outcomes across a more focused selection of priorities for the people of Medway. Statutory and non statutory partners have made a commitment to continue to make Medway a safer and cleaner place to live, work and visit.

The plan identifies Medway, the place, as a unique mix of urban and rural environments set within the Thames Gateway corridor of regeneration. There is an ambitious regeneration programme for the area with Medway Council already investing £200 million in preparation to pave the way for the private sector to invest up to £6 billion. The next three years will see the programme move firmly into its delivery phase.

The Partnership Plan has defined six priorities for the next three years. These priorities are reviewed and refreshed on an annual basis. The priorities identified will each contribute to the safety of people living, working or visiting Medway. The six priorities for 2009/10 include: tackling violence; tackling anti-social behaviour including criminal damage; improving the local street scene; tackling all aspects of substance abuse, including alcohol; reducing the fear of crime and Increasing the public confidence in the police and council.

A number of consultation events were conducted with the public at a number of shopping centres and supermarkets across Medway. This gave an opportunity for the public to tell us what concerns them most about feeling safe in Medway. This information has been used along with analytical data to produce the 6 priorities that the partner agencies within Medway Community Safety Partnership have committed to deliver on.

These priorities will be delivered by partners including Medway Council, Kent Police, Kent Police Authority, Kent Fire and Rescue Service, Kent Probation, Her Majesty's' Prison Service (HMPS), NHS Medway, and the Public Health Team, together with the voluntary and private sector. For 2009 a new Community Safety Partnership Office has been developed in the true spirit of partnership working co located on one site working to deliver the priorities as outlined.

The plan will be reviewed on a yearly basis to ensure the priorities are relevant and the action plans will be refreshed every year.

The Place

Medway is a unique mix of urban and rural. Medway has seen gradual economic recovery and diversification over the last 20 years after the collapse of heavy industries. This is set to continue with the Thames Gateway - a national priority area for regeneration and growth.

The majority of the population (85 per cent) lives in the urban areas, which are centred on the five towns of Chatham, Rochester, Strood, Gillingham and Rainham. Medway is surrounded by a rural area on the Hoo Peninsula and Cuxton and Halling.

Medway is not a deprived area, but at ward level we have some of the most affluent and some of the most deprived areas in the country. In particular, low income and employment levels drive deprivation.

The People

Some 251,072 people live in 102,073 households in Medway; 51 per cent are female and 49 per cent are male. The population is expected to increase to over 300,000 by 2030. Some 5.4 per cent of the population come from ethnic minority communities. The area has a young population relative to England. There is also expected to be a 75 per cent growth in the over 60s by 2028.

There has recently been an increase in new arrivals from accession states. A significant number of students in Medway are from overseas, reflecting a changing ethnic mix in the local population. This, together with the arrival of migrant workers from the EU accession countries, means that Medway's ethnic diversity is changing rapidly. This brings challenges of integration and the need to overcome communication difficulties to promote trust and understanding to build a strong community.

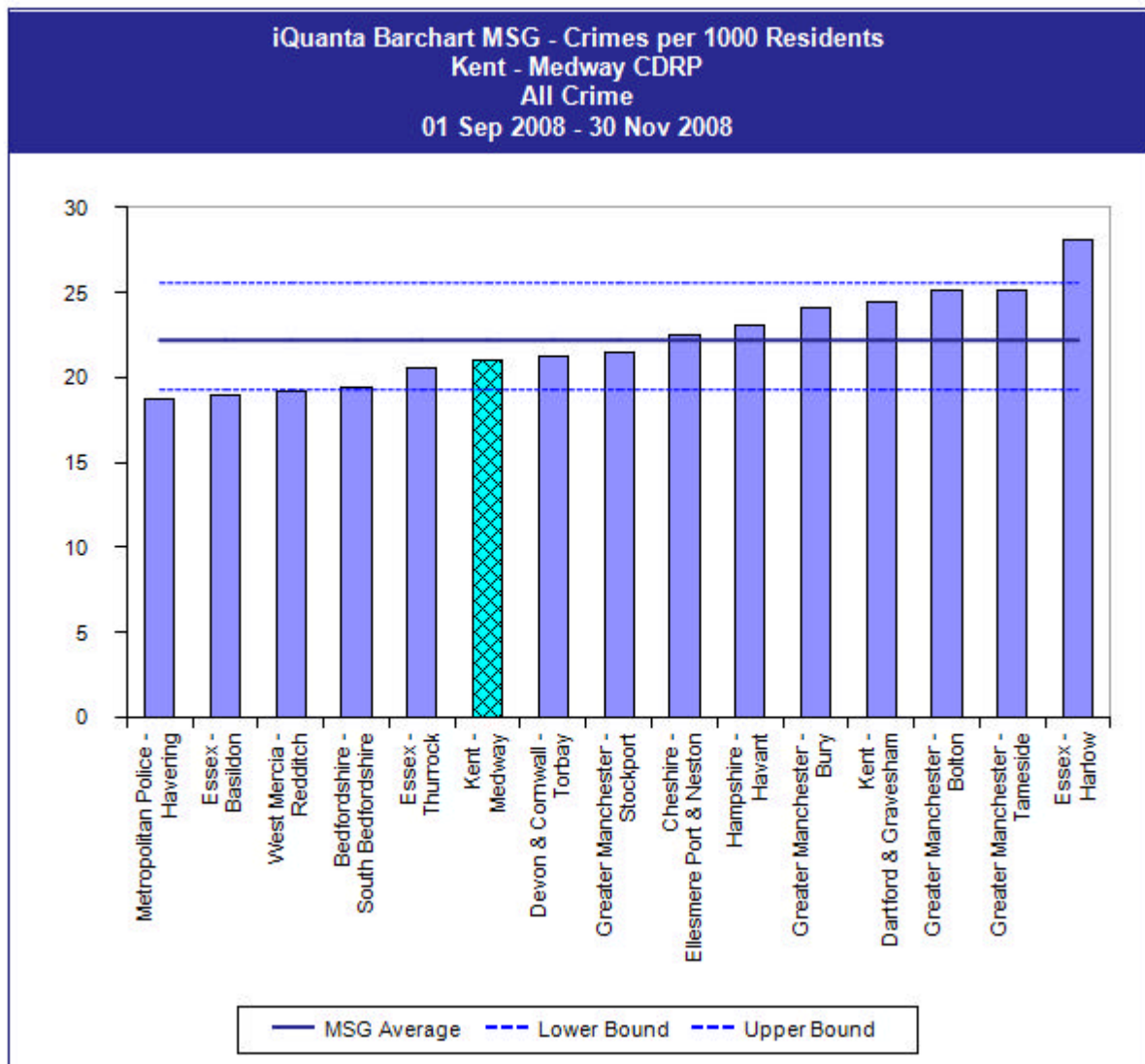
The Economy

Employment patterns in Medway have changed dramatically over the past 20 years, with service sectors now accounting for nearly 75 per cent of employment. Our regeneration activity is targeted to deliver 26,000 new jobs by 2026 in sectors such as construction and cultural and creative industries. Tourism is a thriving economic sector, set for further growth. Medway is in close proximity to London (30 miles) and as such nearly 26 per cent of our working population commute to the capital.

Crime

Medway Crime Overview

This chart shows Medway compared with 14 other CSPs around the country, which have been deemed as being similar to Medway in respect of population, employment, economics, education and crime.



MSG= most similar group

(Source Kent Police BIU MSP December 2008)

Medway has made some vast improvements with reducing crime and disorder over the last year, with around 1500 less victims compared with 2007/08. Burglary has seen a reduction of over 24% and Vehicle Crime has had a reduction of just over 17% when compared with 2007/08.

Reductions have also been experienced in Violent Crime and Criminal Damage both by 7% and, but we want to reduce this more.

Medway has moved down the ranks from 4th to 6th when we are compared with other similar Partnerships around England, as shown in the chart above, but this shows that as fast as we are improving, other Partnerships are working effectively to reduce their crime too.

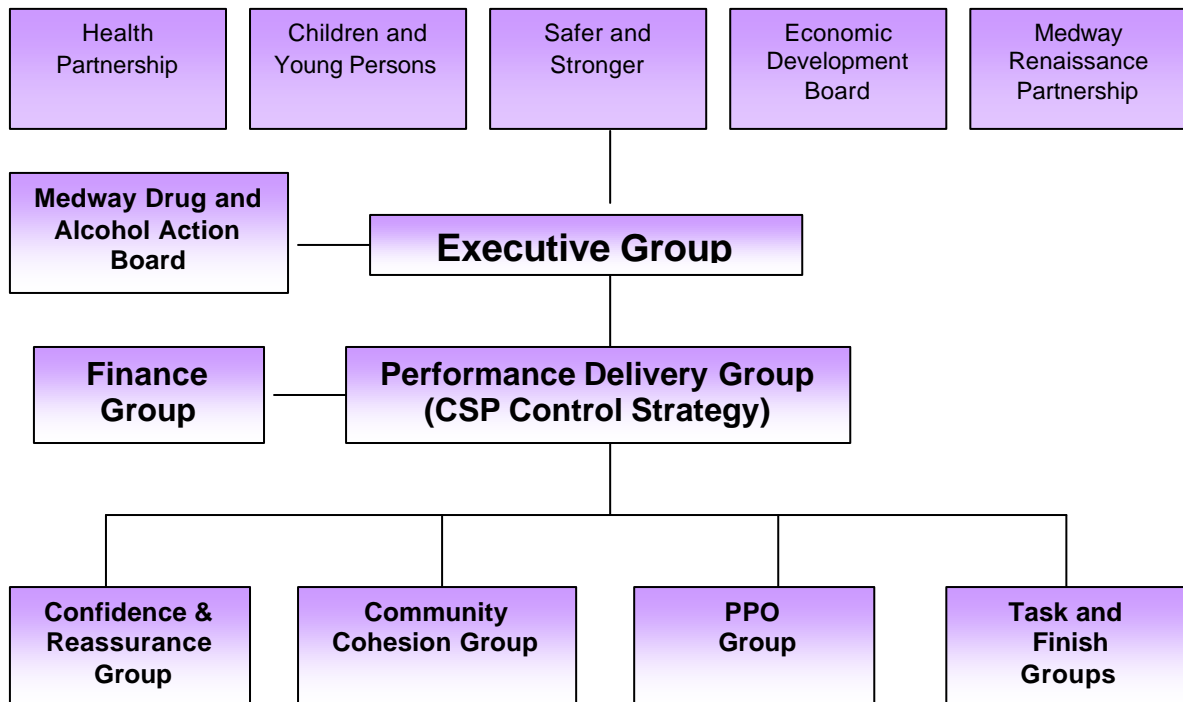
The Medway CSP was formed in 1998 in response to the requirements of the Crime and Disorder Act 1998. The act places a duty on local authorities, the police, Police Authority, Fire Authorities and the PCT to form a partnership to tackle problems of crime and disorder in their local area.

The CSP is one of five thematic groups of the Local Strategic Partnership (appendix 2) and as such works towards delivering the vision of Medway as a city of learning, culture, tourism and enterprise.

The structure consists of an overarching Strategic Executive Group that steers and directs the Performance Delivery Group (PDG). There are also sub groups that sit under the PDG to assist with delivering the priorities laid out in this plan (see appendix 1).

The Chair of the Medway CSP is determined on an annual basis. This role is presently held by the area commander for Kent Police and the role of vice chair presently held by the Council Cabinet member with portfolio responsibility for community safety.

The strategic leadership of the Community Safety Partnership demands clear accountability and performance management through effective processes to improve local community safety.



Statutory content

Key national drivers to combat crime and disorder include:

- the Crime and Disorder Act 1998;
- the Police and Justice Act 2006;
- Public Service Agreement;
- National Indicators, Local Area Agreement (see appendix 2).

The Crime and Disorder Act

Section 17 of the Crime and Disorder Act 1998 requires local authorities and the police to exercise all their functions with regards to the effect on, and the need to prevent, crime and disorder in their areas. This was underpinned by the statutory duty placed on responsible authorities to produce a three-year strategy.

The Police and Justice Act

The Police and Justice Act 2006 repealed the duty of a Crime and Disorder Reduction Partnership (CDRP) to produce three yearly audits and strategies. Replacing this, Schedule 9 of the Police and Justice Act introduced regulations for the formulation and implementation of annual rolling three-year strategies to reduce crime and disorder and combat substance misuse, whereby a strategic assessment will be done annually and reviewed every six months.

Public Service Agreement (PSA)

PSAs set out for the public and practitioners the government's priorities and how the government will measure success. The two key PSAs for 2008/11 for crime reduction and community safety are:

- **PSA 23: Make communities safer**

This PSA is broken down into four priority actions, each reflecting the direction of the crime strategy:

- Reduce the most serious violence.
- Continue to make progress on serious acquisitive crime.
- Tackle the crime, disorder and anti-social behaviour issues.
- Reduce re-offending through the improved management of offenders.

- **PSA 25: Reduce the harm caused by alcohol and drugs**

The PSA has three main strands, underpinned by a new national alcohol strategy and a forthcoming drug strategy:

- Reduce the harm caused to the development, achievement and well-being of young people and families.
- Reduce the harm caused to the health and well-being of drug users and those using alcohol in harmful ways.
- Reduce the harm caused to the community as a result of associated crime, disorder and anti-social behaviour.

National Indicators (NIs)

NIs have been derived from PSAs. NIs provide a clear statement of the government's priorities for delivery by local government and its partners. NIs provide clarity about the balance between national and local priorities and also present a robust performance framework, all of which form a basis for the Local Area Agreement (LAA).

The Strategic Assessment

The Strategic Assessment is a report that is used to inform strategic decision-making by looking at all issues affecting the partner agencies within the Medway CSP. The report looks at crime trends and progress for the previous 12 months and looks ahead at possible outcomes, depending on current performance and issues. As all of the partners work to a set target; the Strategic Assessment looks at how well they are performing in regard to their targets and what needs to be made a priority and given extra focus to ensure that the targets are met and that we are achieving our objectives.

The Strategic Assessment and the decision-making process surrounding the priorities form part of the requirements set out within the National Intelligence Model, which recommends processes to which all police and partnerships need to comply with.

Public Consultation

As part of the strategic assessment, the CSP are required to carry out public consultation on the identified priorities. Medway CSP carried out a strategically positioned consultation exercise around Medway between the 21st November and 4th December 2008. Over 1,300 residents, visitors and workers took part in the consultation whereby priorities were identified. Across the area, concerns about “people using or dealing drugs” was the highest priority (21%), followed by “teenagers hanging around” (15%) and fear of being physically assaulted or attacked (13%). These identified priorities were considered and now appear within the Plan.

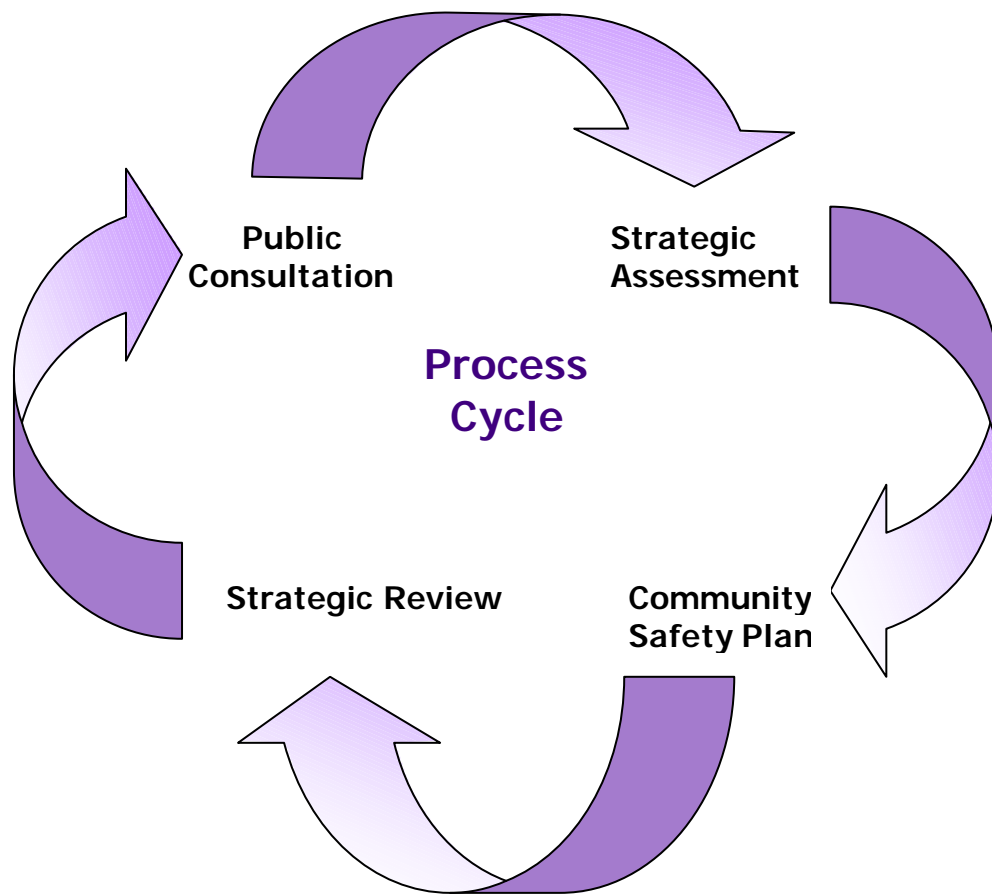
The plan

The CSP Plan is underpinned by new statutory requirements, in accordance with legislation. As such, the Partnership Plan 2008-2011 was the first plan to appear in the new format. The plan is an annual rolling three year plan that allows the partnership to develop short, medium and long-term priorities that are relevant and reflect crime and disorder in the area.

The second strategic assessment was undertaken in November 2008. It identified that the CSP priorities needed to be more focused. As a result of this the number of priorities have reduced to six whereby repeat incidents of crime and disorder will run through each priority. The strategic assessment, coupled with the public consultation, has identified the following priorities:

- Priority One: **Tackling Substance Misuse**
- Priority Two: **Tackling ASB, including criminal damage**
- Priority Three: **Reducing Repeat Business of Violent Crime**
- Priority Four: **Improving Local Street Scene**
- Priority Five: **Reducing your worry of crime and disorder**
- Priority Six: **Improving your confidence in Medway CSP**

Annual Cycle



Why is this a Priority for Medway Community Safety Partnership?

Substance Misuse affects 1 in 3 people at some point in their lives and we want to ensure that we can provide the best assistance, support and treatment for those people affected. Substance misuse in youths can lead to major health concerns and criminal activity later in life, and here at Medway, we are committed to tackling substance misuse as a Partnership. The largest substance misused in Medway is Heroin followed closely by Alcohol, and over the last year we have increased the amount of people receiving treatment, but we want to tackle all aspects of substance misuse, including the associated crime and disorder. During the Public Consultation nearly a quarter of the respondents who lived in Medway said that 'People using or dealing drugs within their neighbourhood' was their greatest concern, with 'People being drunk and rowdy in public', also being raised as a concern. Together, we endeavour to tackle substance misuse in Medway.

What are we going to do?

- Reduce drug related offences (NI 38 Drug-related (Class A) offending rate)
- Reduce number of alcohol related hospital admission (NI 39 Alcohol-harm related hospital admission rate)
- Increase number of drug users in treatment (NI 40 Drug users in effective treatment)
- Improve perceptions of drunk behaviour being a problem (NI 41 Perceptions of drunk or rowdy behaviour as a problem)
- Improve perceptions of drug use or drug dealing being a problem (NI 42 Perceptions of drug use or drug dealing as a problem)
- Reduce number of young people using recreational drugs (NI115 Substance misuse by young people)

How are we going to do it?

To provide effective and efficient drugs and alcohol services and post treatment provision

The CSP will work closely with the Medway Drug and Alcohol Action Team (MDAAT) to identify key priorities following Medway substance misuse needs assessment relating to drug treatment commissioning system. MDAAT will look to improve post treatment provision to assist with reintegration into the community.

Improve access, engagement and retention of drug users in the drug treatment system

The Priority and Prolific Offender Group will be utilised to reduce drug related death risk to high end users by working with individuals to gain successful rehabilitation.

Increase Awareness

Projects will be commissioned and delivered by the Community Safety Partnership Office to raise awareness of the dangers of drug misuse; this will include working within schools to ensure that young people stay healthy and improve children's outcomes

Develop a holistic approach to understanding substance misuse demographics

MDAAT will use improved intelligence to create accurate profiles of substance misuse to ensure a more targeted approach in reduction.

Priority 2

Tackling anti-social behaviour, including criminal damage

Why is this a Priority for Medway Community Safety Partnership?

Tackling Antisocial Behaviour and Criminal Damage in Medway is a priority to both you and us, and you have highlighted this to us in many different ways, through Partners and Communities Together (PACT) meetings, public consultations and your communications with the different agencies within the Medway CSP. Antisocial Behaviour and Criminal Damage have seen reductions of 3281 offences compared to the same period last year.¹ We are working hard to continue to improve on these reductions by working with you, your community, local groups and different agencies to make your neighbourhood is a place where you feel safe and enjoy Living, Working and Socialising.

What are we going to do?

- Improve the perception of ASB (NI 17 Perceptions of anti social behaviour)
- Improve partnership working in tackling ASB (NI 21 Dealing with local concerns about anti social behaviour and crime by the local Council and Police)
- Ensure that the Police and Council continue to understand local concerns about anti social behaviour (NI 27 Understanding of local concerns about anti social behaviour and crime by the Police and Council).
- Improve public confidence in the police and council (NI 24 Satisfaction with the way the police and local council dealt with antisocial behaviour)
- Educate parents on the effects and consequences of ASB (NI 22 Perceptions of parents taking responsibility for the behaviour of their children in area)

How are we going to do it?

Robustly tackle anti social behaviour

The Performance Delivery Group will identify hotspot areas of anti social behaviour and robustly use the ASB toolkit within the CSU, including suitable interventions for young people and continual support whilst in custody.

Improve the public's perception

The Community Safety Partnership will deliver a communications plan for community safety that will produce regular updates on reduced crime rates and positive action across a range of media.

Listen to the public

The Community Safety Partnership will deliver a communication plan that will coordinate road shows, campaigns and regular public consultations to inform and listen to Medway people.

Keep young people and children safe

The CSP will continue to work towards the aims and objectives of the Children's and Young People's Plan to ensure that there are high quality arrangements in place for prevention, early identification and early intervention in order to improve outcomes for all.

¹ Source BIU as at 12/01/09 - ASB 370/371 codes 07/08 = 5229, 08/09 = 2321; CD 07/08 = 4353, 08/09 = 3980. Total difference of 3281.

Tackling Repeat Business² of Violent Crime³

Why is this a Priority for Medway Community Safety Partnership?

Reducing violent crime within Medway is a priority for us, to ensure that Medway continues to be a safe place to Live, Work and Socialise. Medway has seen good reductions in violent crime compared to the last two years, with around 400⁴ less victims, but in order to maximise the best use of the resources available to the CSP we need to tackle the **repeat** victims, offenders and venues. Approximately 40% of all Medway's violent crime is repeat.

Whilst tackling violent crime, we hope to provide reassurance to increase your confidence and decrease your worry around being a victim of violent crimes in Medway. Thus, bridging the gap between your perceptions and what is actually happening within Medway.

What are we going to do?

- Reduce incidents of violent crime (NI 15 Serious Violent Crime Rate)
- Reduce assault with injury (NI 20 Assault with injury rate)
- Improve perceptions of drunk and rowdy behaviour within the night time economy (NI 41 Perceptions of drunk or rowdy behaviour)
- Increase feelings of safety within the community (Q6 Place Survey: To what extent do you think local public services are working to make the area safer).

How are we going to do it?

Reduce Domestic Abuse

The Community Safety Partnership will continue to work with the Domestic Abuse Forum in implementing actions to improve outcomes.

To prevent personal threat to children and young people

The Community Safety Partnership will bring together partners to share collaborative response to issues affecting the schools and community. The CSP will assist in keeping young people safe from personal threat and out of the Criminal Justice System, in line with the Every Child Matter's Agenda.

Tackle late night disorder

The Performance Delivery Group will examine offences within the nighttime economy and implement long-term preventative measures through the community safety unit.

² Repeat Business – defined as any Victim, Venue or Offender that is identified on more than one occasion within a rolling 12-month period.

³ Violent Crime consists of Violence Against the Person (VAP), Robbery and Sexual Offences.

⁴ Source BIU as at 12/01/09 3751 offences 2008/09 and 12/01/08 4003, and 31/12/07 3889. Total 390 fewer offences for 2008/09 compared to previous two years.

Priority 4

Improving your Local Street Scene

Why is this a Priority for Medway Community Safety Partnership?

Where you live is important to you, and to us. We want to be able to work with you and your neighbours to ensure that where you live is clean; free from abandoned vehicles, graffiti and rubbish, and to improve the way you feel we work together in order to best achieve these aims. We want you to be proud of your neighbourhood, and by improving your local street scene, together; we want to make Medway a cleaner and safer place to Live, Work and Socialise.

What are we going to do?

- Improve the local street scene (NI 195 Improved street and environmental cleanliness)

How are we going to do it?

Increase Awareness

The Community Safety Partnership will coordinate actions to educate the public in the negative effects of graffiti, littering and flytipping, including environmental damage, cost and personal consequences.

Reduce graffiti and Flytipping

The Community Safety Partnership will concentrate efforts in identifying offenders. The CSU will tackle offenders of graffiti through a mixture of enforcement and diversionary activities.

Improve partnership working

The Community Safety Unit will coordinate resources to tackle environmental crime through intelligence led operations and specific projects in those areas that are worst affected.

Why is this a priority for Medway Community Safety Partnership?

All Partnerships within England are measured on how safe their residents feel, and what crime and disorder the members of its communities worry about the most. In Medway, there is a disproportionate amount of worry around certain crime and disorder, compared with how much crime and disorder is actually taking place. We aim to try to improve how you feel about Medway and work with you in order to understand your concerns and work towards alleviating them and bridging the gap.

What are we going to do?

Reduce the fear of crime and perception of crime. (NI. 21)

How are we going to do it?**Increase visible uniformed presence**

The Performance Delivery Group will coordinate a visible presence of officers from the council and police working together at the appropriate times and places to reduce the opportunity for offences to take place and to reassure the public

Tackle the perception of crime

The Community Safety Partnership will publicise current crime figures, relevant to Medway to reassure the public of the low levels, compared to those perceived.

Priority 6

Improving your confidence in Medway Community Safety Partnership

Why is this a Priority for Medway Community Safety Partnership?

We want you to feel confident that we are aware and responsive to your concerns. We have recently carried out Public Consultation around Medway to establish what your concerns are, and we are using all our resources as efficiently as possible to ensure that we are tackling your concerns.

What are we going to do?

Deal with local concerns about anti-social behaviour and crime through the police and local authority (NI. 21)

Understand local concerns of anti-social behaviour and crime through the local council and police (NI. 27)

How are we going to do it?

Increase public awareness

The Community Safety Unit will keep the public informed of our ongoing and planned activities to reduce the opportunity for criminal activity in neighbourhoods

Provide enhanced community engagement

The Confidence and Reassurance Group will frequently identify opportunities for community engagement in Medway to gauge local concerns

Provide an accessible Partnership

The Community Safety Partnership will ensure that it is accessible and informative to all residents of Medway.

Contacts

Safer Communities Service

Medway Council
Gun Wharf
Dock Road
Chatham
Kent
ME4 4TR
01634 333333

Medway Council's contact points

Chatham Contact Point
Riverside One, Dock Road,
Chatham, Kent ME4 4SL
01634 333333

Rainham Contact Point
1-3 Station Road
Rainham, Kent ME8 7RS
01634 333333

Gillingham Contact Point
Gillingham Library
High Street, Gillingham
Kent ME7 1BG
01634 333333

Rochester Contact Point
Rochester Library
Eastgate, Rochester
Kent ME1 1EW
01634 333333

Strood Contact Point
Annex B, Civic Centre
Strood, Kent ME2 4AU

Medway Neighbourhood Policing Teams –

- East 1 01634 792344 (Gillingham)
- East 2 01634 792691 (Twydall/Rainham)
- West 01634 792346
- Central 01634 792347

Kent Fire and Rescue Service

- 01622 692121

One-stop shop

- Sunlight Centre, Richmond Road, Gillingham, Kent ME71LX (tel: 01634-338686)

Domestic abuse hotline

- 0808 2000247

Kent homophobic and transphobic incident reporting line

- 0800 3289162

Anti-terrorist hotline

In confidence on 0800 789321

Text service for the deaf or speech-impaired

If you're deaf or speech-impaired, you can **text** Kent Police. Start the message with the word **police** then leave a space and write your message including what and where the problem is.

Send your text to **60066** (the Kent Police communications centre) and they will reply with a message.

Appendices

Appendix One - CSP Groups

Strategic Executive Group

The Executive Group is the 'strategic arm' of the partnership that gives steer, leadership and direction to the Performance Delivery Group. It is responsible for financial plans, accountability and excellence as defined by the Hallmarks of Effective Partnerships⁵

Performance Delivery Group

The Performance [Tactical] Delivery Group is the 'doing arm' of the partnership. It is an intelligence led business process, driven by partnership analysis collated by the CSP analyst. The analysis of crime and disorder concentrates on the performance of the identified CSP priorities, the Partners and Communities Together (PACT) priorities and 'hotspot' areas. The 'hotspot' areas will be identified by drilling down to street level crime and disorder, i.e. targeting those streets with a disproportionate amount of criminal/anti social activity.

Task and Finish Groups

Feeding out of the Performance Delivery Group are 'task and finish' groups. Task and Finish groups are formed in reaction to identified 'hotspot' areas with only the relevant partners attending (i.e. those partners specific to the problem). The Task and Finish groups operate all the while the problem exists. With the right interventions in place these groups will disband after a couple of months whereby new 'hotspots' will be identified and the process will roll on.

Confidence and Reassurance Group

The Confidence and Reassurance Group takes forward the CSP communications strategy. Opportunities will be identified for good news stories and community engagement.

Priority Prolific Offenders Group

The PPO Group selects individuals by the nature and volume of crime they are committing and the nature and volume of harm they are causing to their local communities. Individuals are then referred to the relevant strand; Prevent and Deter, Catch and Convict and Rehabilitate and Resettle. Once on the strand individuals are put on a premium service with targeted intervention.

DAAT Board

The Drug and Alcohol Action Group is accountable for local delivery of the objectives of the Alcohol Harm Reduction Strategy for England. The Medway Drug & Alcohol Board will implement these objectives by strategically commissioning substance misuse treatment services to increase the numbers engaging in treatment and to reduce drug and alcohol related harm and crime for adults and young people in Medway and the communities in which they live.

⁵ Home Office Guidance: Delivering Safer Communities: A guide to effective partnership working.

Appendix 2

| Children, Young People and Families | |
|---|---|
| Improve outcomes for vulnerable groups including children with a disability; children with special educational needs; children with mental health needs; young people at risk of exclusion or disengagement; young people not in education, employment or training; children in care; young offenders | NI 51* Effectiveness of child and adolescent mental health (CAMHs) services. DCSF DSO |
| Keeping Medway's most vulnerable children safe | NI 59* Initial assessments for children's social care carried out within seven working days of referral |
| | NI 60* Core assessments for children's social care that were carried out within 35 working days of their commencement. DCSF DSO |
| | NI 65* Children becoming the subject of a child protection plan for a second or subsequent time. DCSF DSO |
| Reducing teenage conception rates | NI 112* Under 18 conception rate. PSA 14 |
| Improving access to sexual health services and reducing sexually transmitted diseases | NI 113* Prevalence of Chlamydia in under 25 year olds. DCSF DSO |
| Health, well-being and older people | |
| Tackling obesity in adults and children and young people | NI 8* Adult participation in sport. DCMS DSO |
| | NI 56* Obesity among primary school age children in Year 6. DCSF DSO |
| Reducing substance misuse, including alcohol | NI 39* Alcohol-harm related hospital admission rates. PSA 25 |
| | NI 40* Drug users in effective treatment. PSA 25 |
| Increasing life expectancy | NI 121* Mortality rate from all circulatory diseases at ages under 75. DH DSO |
| | NI 124* People with a long-term condition supported to be independent and in control of their condition. DH DSO |
| Improving smoking cessation rates | NI 123* 16+ current smoking rate prevalence. PSA 18 |
| Promote / support Independent living with a focus on vulnerable groups | NI 141* Number of vulnerable people achieving independent living. CLG DSO |
| Safe and strong Medway | |
| Improving community cohesion | NI 1* % of people who believe people from different backgrounds get on well together in their local area. PSA 21 |
| | NI 4*, % of people who feel they can influence decisions in their locality |
| Reducing serious violence | NI 15* Serious violent crime rate PSA 23 |
| Reducing serious violence (contd) | NI 16* Serious acquisitive crime rate |
| Reducing anti social behaviour (ASB) | NI 17* Perceptions of anti-social behaviour. PSA 23 |

| | |
|--|---|
| Preventing youth offending | NI 19* Rate of young offenders reoffending |
| Reducing number and offending by prolific offenders | NI 30* Re-offending rate of prolific and priority. |
| Reducing domestic violence | NI 32* Repeat incidents of domestic violence. PSA 23. HO DSO |
| Reducing killed / seriously injured crashes | NI 47* People killed or seriously injured in road traffic accidents. DfT DSO |
| Economic development, transport and skills | |
| Reduce the number of "out of work" benefits | NI 152* Working age people on out of work benefits. PSA 8. |
| Improve skills development | NI 161* Learners achieving a Level 1 qualification in literacy. PSA 2 |
| | NI 163* Working age population qualified to at least Level 2 or higher. PSA 2 |
| Increase the numbers of jobs (formerly - new business start ups) | NI 171* new business registration rate. BERR DSO |
| Responding to the travel demands resulting from regeneration by seeking to limit the growth of traffic | NI 167* Congestion – average journey time per mile during the morning peak. PSA 5 |
| | NI 175* Access to services and facilities by walking, cycling and public transport. |
| Regeneration, including housing, environment and culture | |
| Deliver the target for new homes, supported by appropriate infrastructure | NI 154* Net additional homes provided. PSA20 |
| Increase the number of affordable and student homes | NI 155* Number of affordable homes delivered (gross). PSA 20 |
| | NI 156*, Number of households living in temporary accommodation |
| Reducing the 'carbon footprint' in Medway | NI 186* per capita CO ² emissions in the local authority area. |
| Reduction in waste to landfill | NI 191* kg of residual household waste per household. Defra DSO |

Appendix Three

Framework Plan 2009 - 2010

| Priority | Action | Lead Agency/Team | Other Agencies | |
|----------------------------------|---|--|---|---|
| Tackling Substance Misuse | Develop and deliver Local adults and young peoples alcohol strategy and run “Safe, Sensible, Social” Campaign | Medway Drug and Alcohol Action Partnership Team | Kent Police, Medway Council, NHS Medway, Various Service Providers. | |
| | NI 38 Drug-related (Class A) offending rate | Introduce an SOS bus to Medway to provide a visible, accessible point of contact for those feeling vulnerable or at risk promote drug & alcohol awareness and provide drug and alcohol harm reduction information, advice and referrals in to treatment. Furthermore, to utilise the SOS bus for extended needle exchange. | Medway Local Strategic Partnership | NHS Medway, Kent Police, Medway Council, CVS Medway. |
| | NI 39 Alcohol-harm related hospital admission rate | Robustly use the ASB toolkits when dealing with alcohol related incidences. | Community Safety Partnership Office | Kent Police, Medway Council. |
| | NI 41 Perceptions of drunk or rowdy behaviour as a problem | Engage drug users in effective treatment | Medway Drug and Alcohol Action Partnership Team | Kent Police, Medway Council, NHS Medway, Service Providers. |
| | NI 42 Perceptions of drug use or drug dealing as a problem | Alcohol and substance misuse, adults and young persons needs assessment | Medway Drug and Alcohol Action Partnership Team | Kent Police, Medway Council, NHS Medway, Service Providers |
| | | Re-instigation and redesign of the Medway Drugs Forum | Medway Police | Medway Council, MDAAT |
| | | To carry out intelligence led prevention work. | Medway Drug and Alcohol Action Partnership Team | Kent Police, Medway Council, Medway NHS |
| | | Target Priority and Prolific Offenders (PPO's) | Integrated Offender Management Unit | Kent Probation, HMP Prisons, MDAAT |
| | | Media Campaign, Citizen Focus & Reassurance | Medway Drug and Alcohol Action Partnership Team, | Medway Council, Medway Police, Local Press |

| | | | |
|---|---|-------------------------------------|---|
| Tackling ASB, Incl. Criminal Damage NI 17 Perceptions of anti social behaviour NI 21 & 27 Understanding and dealing with local concerns about anti social behaviour and crime by the local Council and Police NI 24 Satisfaction with the way the police and local council dealt with antisocial behaviour. NI 22 Perceptions of parents taking responsibility for the behaviour of their children in area | To tackle ASB caused by individuals or families through the Community Safety Partnership Office. | Community Safety Partnership Office | Medway Housing, Medway RSLs, Kent Police |
| | To carry out joint high visibility operations aimed at reducing crime and tackling ASB, to include robust media coverage. | Community Safety Partnership Office | Medway Council, Medway Police, Local Press |
| | Neighbourhood officers/PCSOs to prioritise ASB calls and investigate incidents of criminal damage | Kent Police | |
| | To identify 'hot spot' areas and engage partners in resolutions | Community Safety Partnership Office | Medway Council, Kent Police, Kent Fire and Rescue, NHS and Probation. |
| | Improved education and awareness of target groups including seeking diversionary activities. | Community Safety Partnership Office | Medway Council, Kent Police. |

| | | | |
|--|---|--------------------------------|-------------------------|
| | Op Safer Streets – Seasonal hi visibility and intervention campaigns | Kent Police | Medway Council |
| | Conduct Environmental Visual Audits of repeat offence location | Kent Police and Medway Council | Medway Housing and RSLs |
| | Test purchase operations to be run to ensure alcohol is not sold to under 18s | Police and Medway Council | Local Businesses |
| | Develop youth diversion activities | Police and Medway Council | |

| | | | |
|--|--|--|--|
| within the community | Develop positive initiatives with local night clubs | Police and Medway Council | Local Businesses |
| | Roll out gun and knife education pack to all secondary schools | Kent Police | |
| | Expand membership of the Safer Medway Partnership | Safer Medway Partnership | Kent Police |
| | Identification and intervention through analysis of repeat victim/offender venues | Kent Police | Medway Council, RSLs |
| Improving the local street scene | To develop a local street scene strategy that will prevent, educate, remove and enforce. | Community Safety Partnership Office | Kent Police, Kent Probation, |
| NI 195 Improved street and environmental cleanliness | To identify hotspots and coordinate partners into action through CSU briefings and the Performance Delivery Group. | Community Safety Partnership Office | Kent Police, Medway Council, Kent Fire and Rescue, NHS and Kent Probation. |
| | To listen to public concerns regarding their local street scene | Community Safety Partnership Office | Kent Police, Medway Council |
| | To run a variety of operations, events and projects | Community Safety Partnership Office | Medway Council, Kent Police |
| | Targeted deployment of the CSP surveillance vehicle. | Community Safety Partnership Office | |
| | To continue to work with partners agencies to reduce the risk at road traffic accident hotspots in line with objectives in the Local Transport Plan 2006/11. | Medway Council and Kent Fire and Rescue | Kent Police |
| | To roll out multi agency road safety campaigns around the top causes of serious injury or fatalities, with educational and enforcement elements. | Medway Council | Kent Police, Local Press |
| | Public Confidence | To deliver a communications strategy for community safety which will celebrate positive action through a range of media and develop the confidence and reassurance group to take forward the strategy. | Community Safety Partnership Office |
| Dealing with local concerns about anti-social behaviour and crime by the police and local authority (NI. 21) | To increase community safety messages and awareness of the CSP via various mediums. | Community | Kent Police, Medway Council, Local Press |
| Understanding of local | | | |

| | | | |
|--|--|-------------------------------------|---|
| concerns of anti-social behaviour and crime by the local council and police (NI. 27) | To hold public consultations, road shows and educational campaigns to engage with the local community | Community Safety Partnership Office | Medway Council, Kent Police |
| | Strengthen links between the NPU and CSP tactical structures to make community engagement more effective. | Community Safety Partnership Office | Medway Council, Kent Police |
| | Improve use of and standards around Partners and Communities Together (PACTs) | Community Safety Partnership Office | Medway Council, Kent Police |
| Fear of Crime NI 21 Reducing the fear of crime and the perception of crime. NI 27 Understanding of Local concerns about ASB and crime by the local council and police | To distribute regular community safety partnership newsletters to all Medway residents. | Community Safety Partnership Office | Kent Police, Medway Council, Local Press |
| | Publish good news stories in Medway Matters/Partnership Newsletters/ Magazines | Community Safety Partnership Office | Kent Police, Medway Council, Local Press |
| | Provide shadowing opportunities for PCSOs /CSOs | Community Safety Partnership Office | Kent Police, Medway Council |
| | Promote 'community safety weeks' to target neighbourhoods | Community Safety Partnership Office | Kent Police, Medway Council, Kent Fire and Rescue, Medway NHS, Kent Probation, RSLs |
| | Focus partnership resources on issues of repeat victims/offenders/venues Support /implement projects as necessary | Community Safety Partnership Office | Medway Council, Kent Police |
| | Target Priority and Prolific Offenders (PPO's) | Offender Management Unit | Medway Council, Kent Police, Kent Probation, HMP Prisons |

Glossary

| | |
|--------------|--|
| ABA | Acceptable Behaviour Agreement |
| ASB | Anti-social behaviour |
| ASBO | Anti-social Behaviour Order |
| CDA | Crime and Disorder Act |
| CDRP | Crime and Disorder Reduction Partnership |
| CSP | Community Safety Partnership |
| CSPP | Community Safety Partnership Plan |
| CVS | Community Voluntary Sector |
| DA | Domestic abuse |
| MDAAT | Medway Drug Alcohol Action Team |
| DISP | Drug Intervention Support Programme |
| ISP | Intensive Support Programme |
| JTCG | Joint Tasking and Co-ordination Group |
| KCVS | Kent Crime Victimisation Survey |
| KFRS | Kent Fire and Rescue Service |
| KPS | Kent Probation Service |
| KPA | Kent Probation Area |
| LA | Local Authority |
| LAA | Local Area Agreement |
| MARAC | Multi-Agency Risk Assessment Conference |
| MDAAT | Medway Drug and Alcohol Action Team |
| NI | National Indicators |
| NTE | Night-time Economy |
| OMU | Offender Management Unit |
| PACT | Partners and Communities Together |
| PCSO | Police Community Support Officer |
| PCT | Primary Care Trust |
| PDG | Performance Delivery Group |
| PJA | Police and Justice Act 2006 |
| PSA | Public Service Agreement |
| SA | Strategic Assessment |
| SCO | Safer Communities Officer |
| SDVC | Specialist Domestic Violence Court |
| SEG | Strategic Executive Group |
| SMP | Safer Medway Partnership |
| SNAP | Say No and Phone |
| YOT | Youth Offending Team |

